



2010

2016

2016

2

DB33/T944.1 2014 DB33/T944.2 2014

CASS-CSR2.0

GB/T36000-2015

G3.1

2017 3 9

<http://www.cninfo.com.cn>

<http://www.china-pipes.com>

317000

0576-85225086

0576-85305080

wxxc@china-pipes.com





1999

PPR

PE

PPR

2010 3

002372

30

CNAS



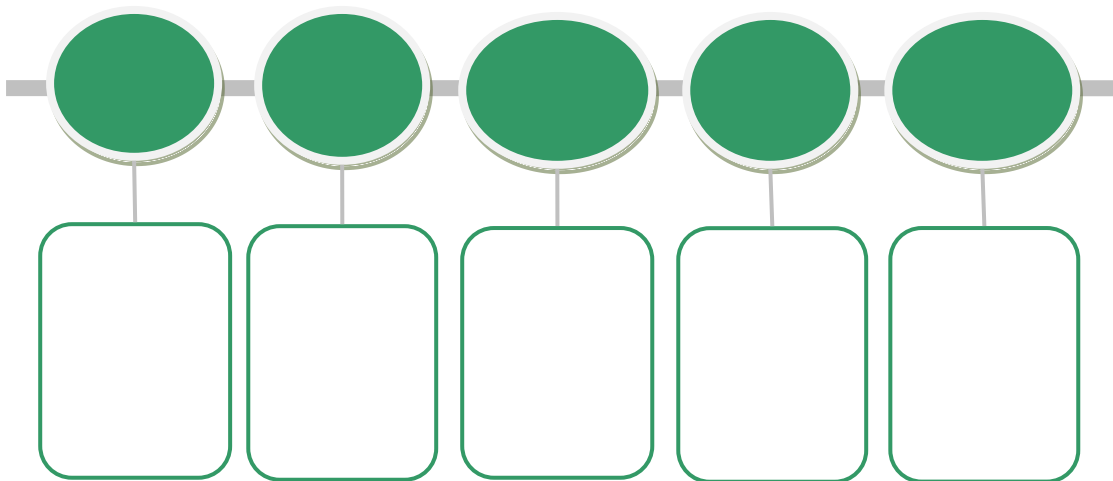


2011

2015

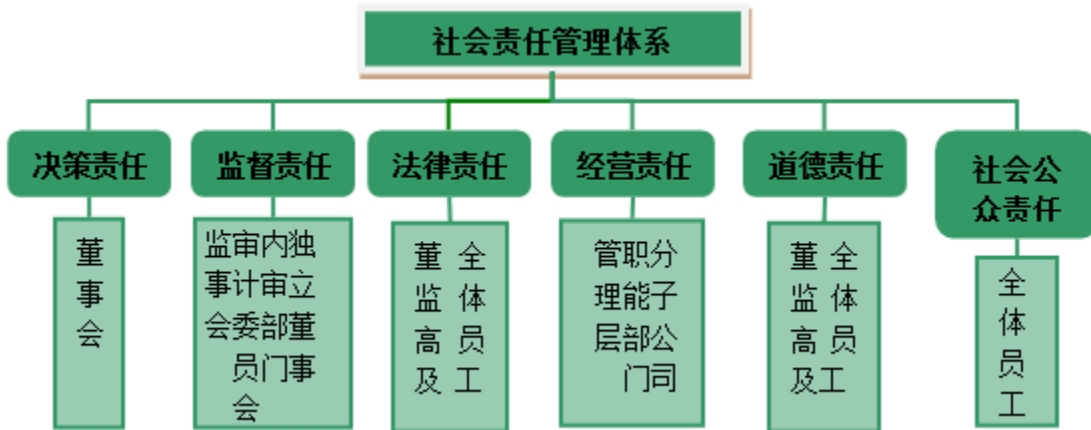
2016

1




--	--

2



3

		1 2 3 4 5 6
		1                      ISO14001                      OHSAS18001  2 3 4 5  6  7 8 9

		1 2 3 4
		1 2 3 4 5 6
		1 2 3 4
		1 2 3 4
		1 2 3 4
		1 2 3 4 5

4

2016

1	2015	
2	2015	
3	2015	
4		

5		
6		
7		
8		
9		
10	30	
11		
12		IQNet CQM
13	AAA	
14	2015	
15	4	
16		
17	AAA	
18		
19		
20	2015	
21		



2016



1

2016

3

10

2016



2

2016

2016

300

A

3

50

6

2016

2016

80

11 40

2016 1 100% 70

2 100

4

2014	255,933.96	235,367.76	45,502.37	38,775.16
2015	290,094.88	274,650.15	57,815.13	48,441.00
2016	367,116.59	332,149.34	79,549.87	67,070.35

2016

AAA

5

2015-2017

2015	10	6 ( )	35,801.39	48,441.00	73.91%
2014	10	6 ( )	26,708.76	38,775.16	68.88%
2013	10	8 ( )	26,977.60	31,567.30	85.46%
					226.01%

2016

10

6 ( )

10

3

2016



1

OHSAS18001



2016

2



3

ELN

APP

,

				MBA/EMBA
				MBA/EMBA

				/	
		/	/		
				/	
		/	/		

2016

20

2410

8259

92.75

2641

48605

168379.42

33

1105

ELN

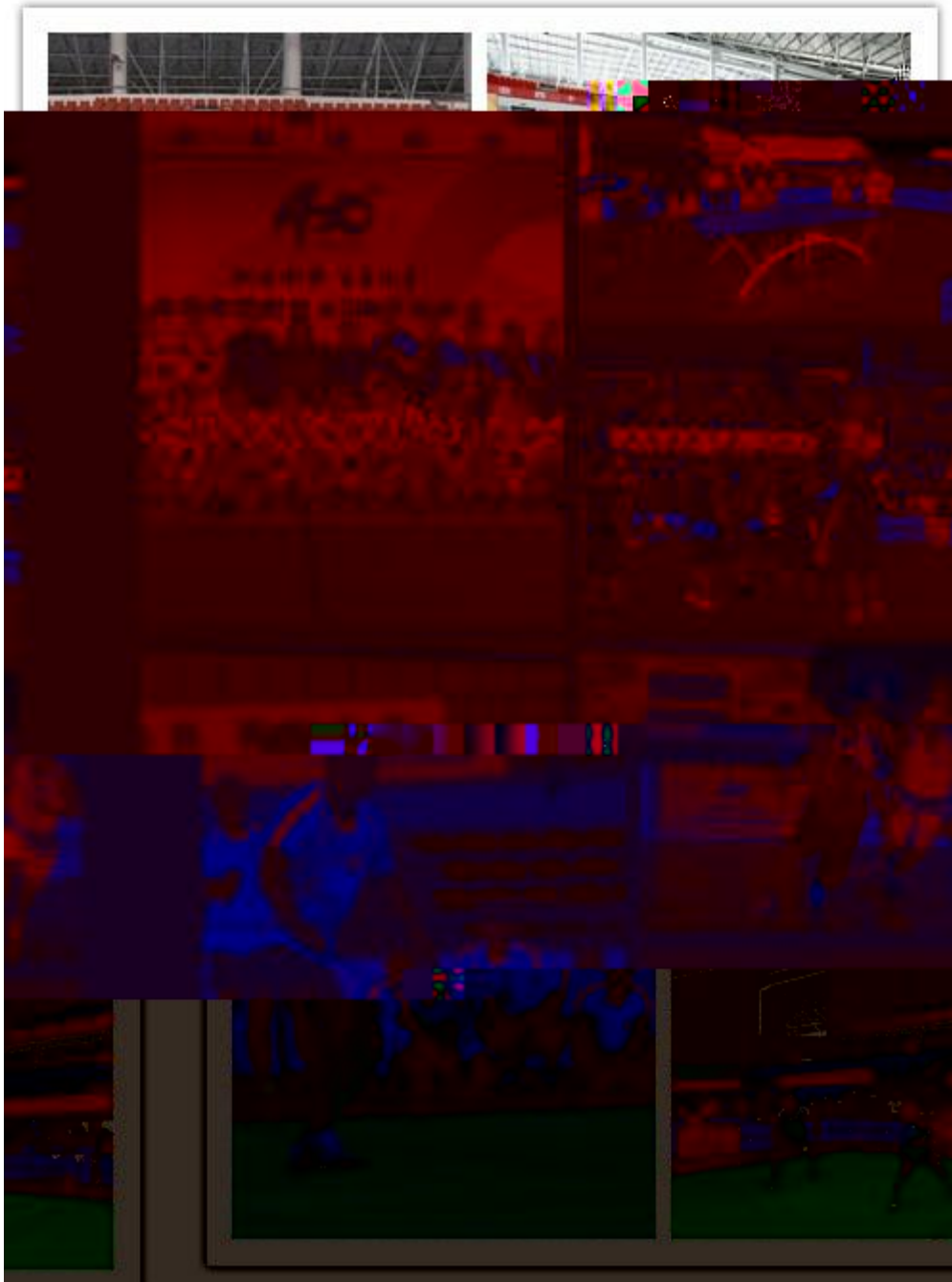
16851.3

15306.5



4

2016		4		9
3	140		0A	0A
				2016

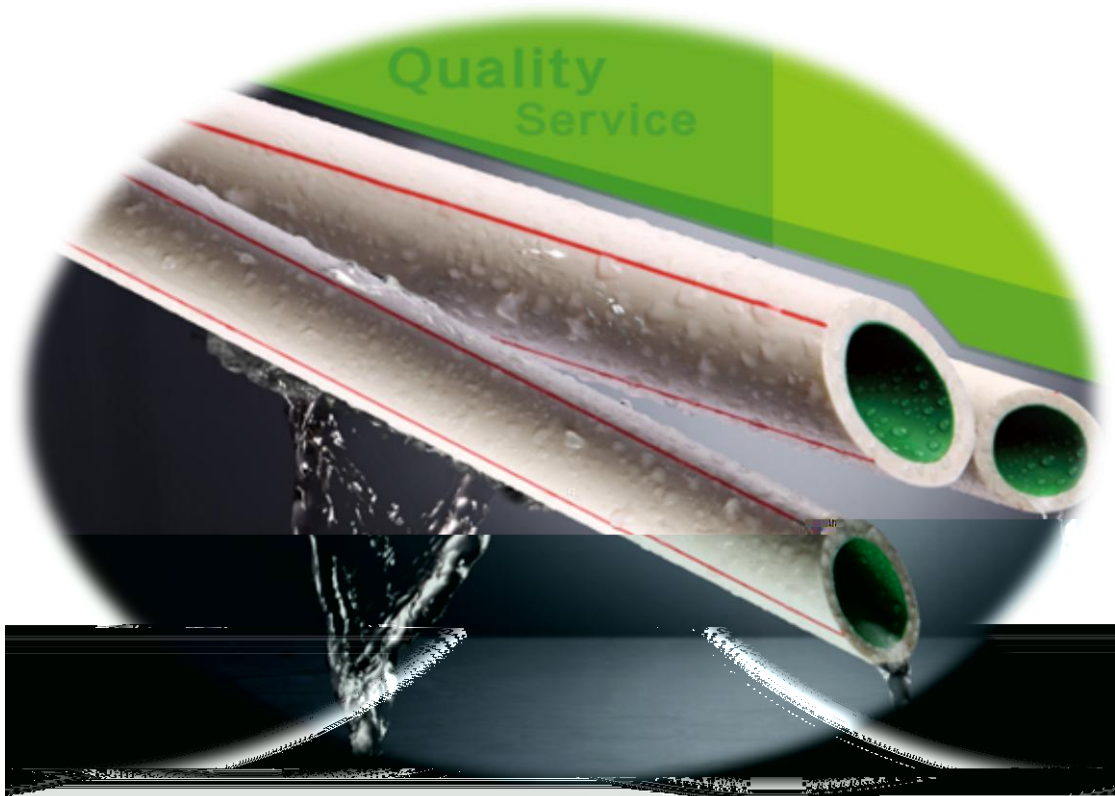






2

1



ISO9001 ISO14001 OHSAS18001

AZ

CNAS

2016

IQNet

CQM

2



3

400

800

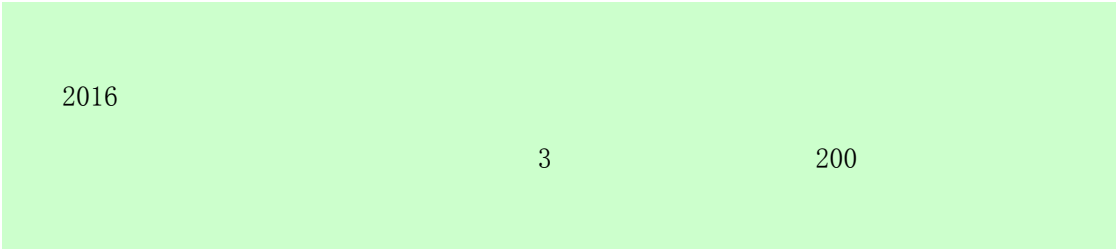
4

2016





40







1

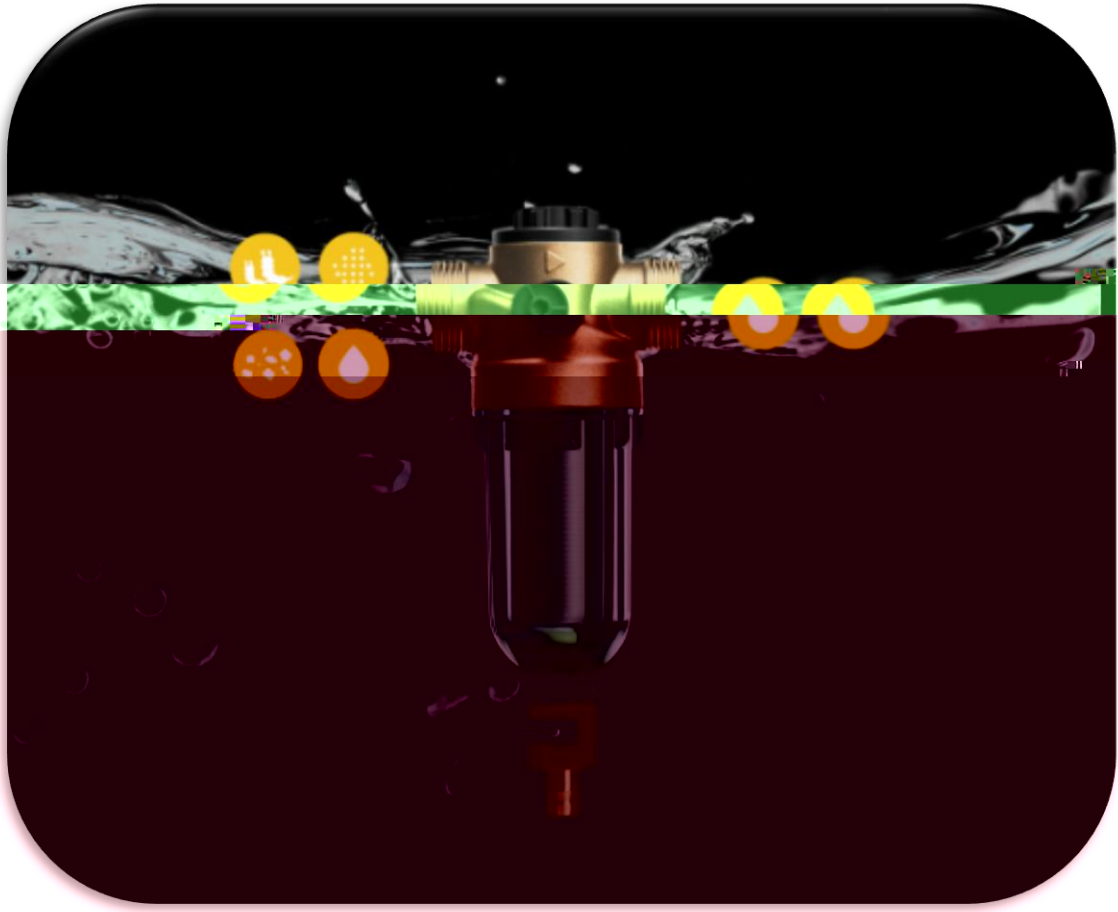
ISO14001 OHSMS18001

2

PPR PE

änette

2016



3



1

2016

11.11

2

3429

171

2016

3

2016

60

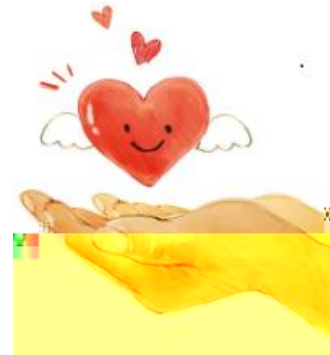
36

400

4

5

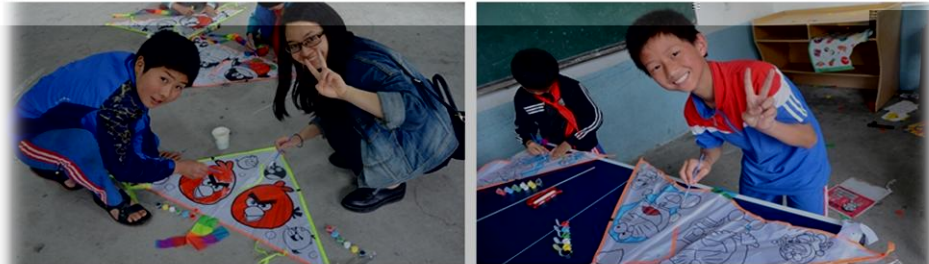
2016



2016

H5







H5

43



2016

2017

2017 3 7